

015 - To Commission Indirect Low Pressure Firetrace[®] Systems With Integrated Isolate Valve (ILPINT)

Warning Firetrace[®] Low Pressure cylinders are pressurised up to 12 bar. Proceed with caution.

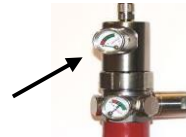
This procedure should be read in conjunction with document 014 basic design layout for Indirect Low Pressure systems with Integrated Isolate Valve.

Do not turn integrated isolate valve until system is fully commissioned. (*pressurised*)

Locate cylinder and firmly secure with bracket provided

Remove black safety cap from the top of the cylinder. Connect Trace detection tube, tighten silver nuts and secure with appropriate clips

Remove gauge FT0107 from the top section of the valve.



Fit Schrader adapter FT0172 and pressurise to **12 Bar / 175 psi** using a **Nitrogen Cylinder or air pump**

Remove Schrader adapter FT0172 and refit gauge FT0107

Using tape, mark the location of the needle on the pressure gauge (*Mid Green*) and **leave system for a minimum of ten minutes per metre of Trace detection tube to check for any leaks on the Detection tube.**

Install FT0184 8mm diffuser pipework, connect to cylinder using FT1050-8-1/4 stud. When installation is complete, disconnect FT0184 from cylinder and fit blank plug.

When satisfied pressure is good and no leaks have occurred, remove the gauge and open the isolate valve slowly using the key provided and refit the gauge.

Remove blank plug and reconnect FT0184 8mm discharge pipework.

System is now live

.....

Optional FT0124 pressure switch can be fitted in spare gauge adapter on head assembly or at end of line. Or discharge confirmation switch can be fitted in the spare discharge port or in the discharge pipe work using adapter provided.



Closed – Keyring Horizontal

Please note system will not operate with isolate valve in closed position



Open – Keyring Vertical

